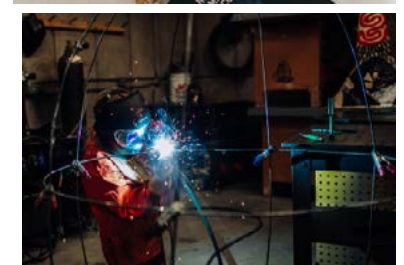
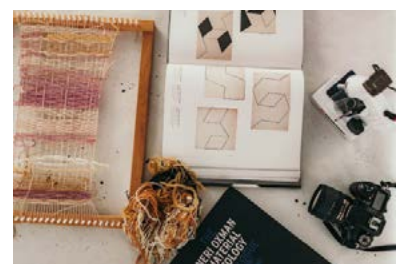


AndersonRanch arts center

health & safety plan

UPDATED NOVEMBER, 2021



health & safety

Overview

Your health and safety are Anderson Ranch's top priority and your active participation in our policies ensures, as best possible, the health and safety of the entire Anderson Ranch community.

Anderson Ranch follows best practices and science-based Covid-19 mitigation strategies. Anderson Ranch is closely following guidance released by the Centers for Disease Control and Prevention (CDC), Colorado Department of Public Health and Environments (CDPHE), the Pitkin County Health Department and the Occupational Safety and Health Administration (OSHA).

Anderson Ranch reserves the right to revise the Health & Safety Plan at any time if deemed in the best interest of the organization. This includes but is not limited to implementing community guidelines that vary from those of the abovementioned institutions. Please review all Anderson Ranch communications for updates that may impact your visit.

Requirements for Studio Program Participants

Covid-19 Vaccination Requirement: All studio program participants are required to show proof that they have received the complete Covid-19 vaccine as well as any CDC recommended booster shots. Complete Covid-19 vaccine status means that two weeks have passed after the 2nd Pfizer or Moderna dose, or the Johnson & Johnson single-dose vaccine.

FOR PROOF OF VACCINATION, YOU CAN USE:

- CDC Vaccination Card. A digital photo or photocopy of this card is also acceptable.
- Vaccination Record or other official immunization record, including from your healthcare provider. A digital photo or photocopy of this card is also acceptable.

PRE-ARRIVAL FORM: Program participants must have completed the [Pre-Arrival Form](#) 10 days prior to your visit. The form collects key information including proof of vaccination and asks participants to certify their agreement to follow Anderson Ranch policies and procedures while they are on campus.

MASKS REQUIRED: All individuals ages two and older, regardless of vaccination status, are required to wear a CDC-qualifying mask in indoor public spaces at all times when not actively eating and drinking to minimize risk and maximize protection from Covid-19. [Click here](#) to learn more about CDC Mask Guidance.

ADDITIONALLY, ALL PROGRAM PARTICIPANTS ARE STRONGLY ENCOURAGED TO:

- Have health insurance. Program participants are responsible for all medical costs incurred during their time at Anderson Ranch.
- Get a flu shot.

health & safety

Additional Safety Precautions in Place

- Social distancing.
- Ventilation and purification including HEPA / MERV air purifiers (99.97% effectiveness against 0.3 micron particles).
- Ongoing cleaning and sanitization measures.
- Hand sanitizer and disinfection wipes available in each building.
- Replacement masks available.
- Touchless thermometers available in each building.
- CPR trained staff are available, and the campus is equipped with Automatic External Defibrillators.
- Frequent review of operational plans for meeting the evolving Covid-19 challenge.

Program Participant Safety Recommendations

- Follow the mask requirement. When in doubt, mask up.
- Socialize Smart: outside is always better than inside and avoid crowds when possible.
- Diligently wash hands and use hand sanitizer frequently throughout the day.
- Clean commonly touched surfaces in work stations throughout the day.
- Wellness Checks: self-assess daily for potential Covid-19 symptoms (fever or chills, cough, shortness of breath or difficulty breathing, fatigue, muscle or body aches, headache, new loss of taste or smell, sore throat, congestion or runny nose, nausea or vomiting, or diarrhea) and stay home if feeling unwell. All children's program participants must participate in daily wellness checks.

Visitor Policy

- **Masks Required:** All individuals ages two and older, regardless of vaccination status, are required to wear a CDC-qualifying mask in indoor public spaces at all times when not actively eating and drinking to minimize risk and maximize protection from Covid-19. [Click here to learn more about CDC Mask Guidance.](#)
- Artistic studios are open 9AM to 5PM Monday through Friday for self-guided tours by members of the public on a limited basis. All visitors should check in at the Welcome Center prior to visiting the studios.
- Select events also require attendees to show (1) identification and either (2) proof that they have received the complete COVID-19 vaccine (i.e. 2 weeks have passed after the 2nd Pfizer or Moderna dose, or the Johnson & Johnson single-dose vaccine) OR a negative Covid-19 test on a specimen taken no longer than 72 hours prior to the event. **Individuals who do not have proof of vaccination or a negative test result will not be permitted entrance.**

FOR PROOF OF VACCINATION, YOU CAN USE:

CDC Vaccination Card. A digital photo or photocopy of this card is also acceptable.

Vaccination Record or other official immunization record, including from your healthcare provider. A digital photo or photocopy of this card is also acceptable.

FOR PROOF OF A NEGATIVE COVID-19 TEST, YOU CAN USE:

Written proof of a negative Covid-19 test from a licensed healthcare provider that includes the date and time of the test as well as the result. A digital photo or photocopy of this card is also acceptable.



Symptomatic Individuals

Program participants experiencing symptoms consistent with Covid-19 should stay home, arrange to get tested and notify their primary contact at the Ranch or contact guestservices@andersonranch.org or call 970-924-5073.

If symptoms develop during the course of the day regardless of the cause (Covid or other illness), the individual should go home immediately and then contact the Ranch.

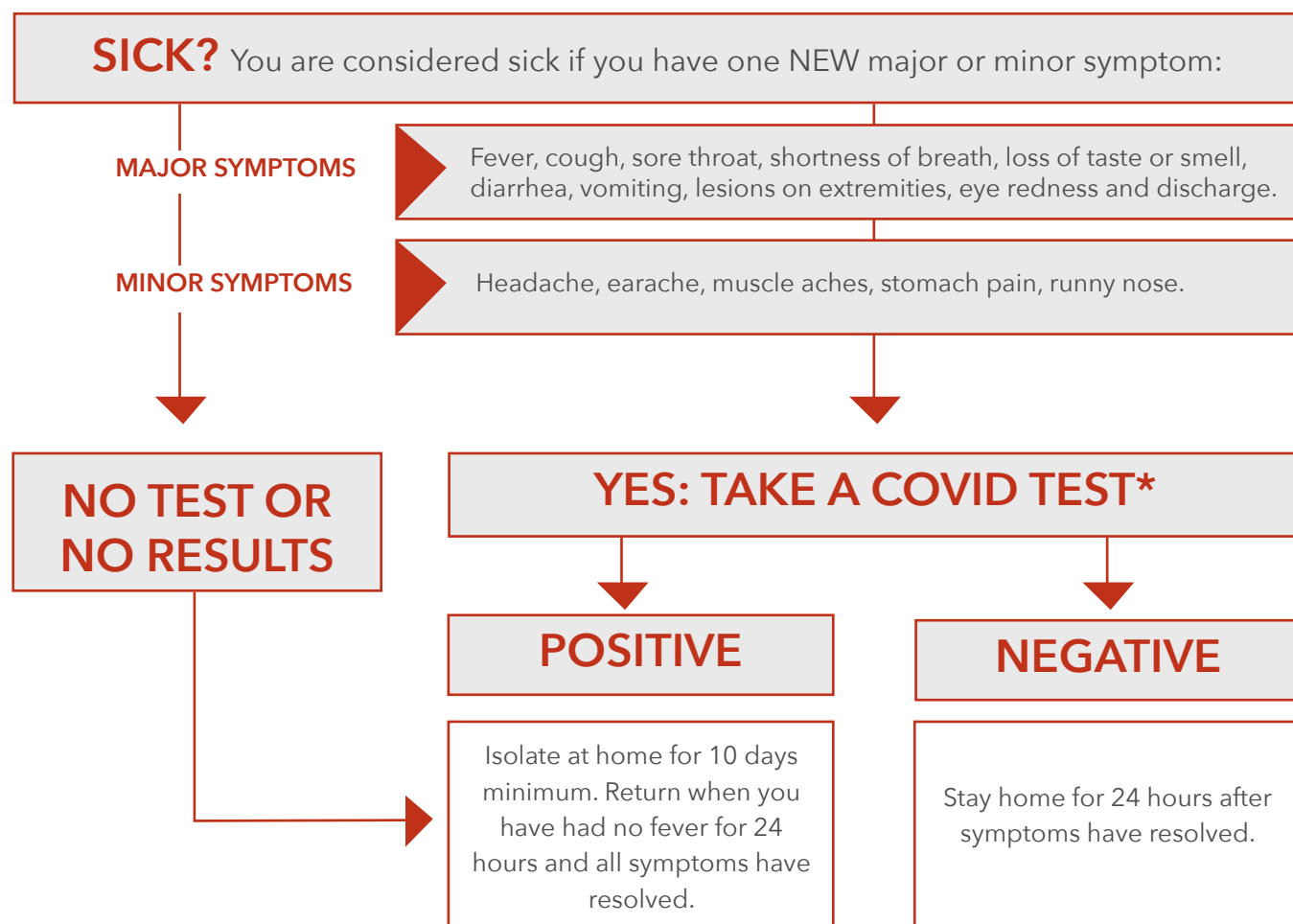
Staff Contact Information

The Anderson Ranch staff wants you to have an excellent experience. For issues or concerns related to the Health and Safety Plan, please email guestservices@andersonranch.org or call 970-924-5073.

Emergency Contact Information

For all major medical emergencies please call 911.

Illness and Testing Protocols



*Valid tests include: Rapid antigen, PCR, or healthcare worker proctored at-home test.

[Click here](#) to see Pitkin County Public Health Testing and Isolation Algorithm for more information.

Testing Site Information

- Go to rfvcovidtest.com to sign up for FREE testing. This testing site will determine the type of test administered. Testing options will be updated as they become available.
- Aspencovidtest.com is another option for use with medical insurance or self pay.
- At this time, we do not have any universal asymptomatic (no known symptoms) testing.
- An unproctored at-home test is not accepted by Anderson Ranch as a valid test.

Isolation Requirements

Individuals who test positive will need to complete a 10-day isolation and follow public health guidelines. Public health will assist with contact tracing to determine close contacts who may need to quarantine.

Lifting mask requirements

If the Pitkin County spread is at 50/100,000 (or lower) for seven days Anderson Ranch may lift the mask mandate in consultation with Pitkin County Health. Anderson Ranch reserves the right to revise the Health & Safety Plan at any time if deemed in the best interest of the organization. This includes but is not limited to implementing community guidelines that vary from those of the abovementioned institutions. Please review all Anderson Ranch communications for updates that may impact your visit.

Confirmed Cases

If someone on campus tests positive for Covid-19, Anderson Ranch will move quickly to notify public health authorities, contain and sterilize possibly contaminated areas and communicate with everyone on campus. The local health department would lead contact tracing efforts. Anyone who tests positive during their stay at Anderson Ranch must either return home immediately or isolate in their residence until they are cleared by a medical professional to resume public life.

Vaccinations for Staff

95% of Anderson Ranch staff are vaccinated. Those who are not fully vaccinated or will not demonstrate full vaccination status are required to wear masks and arrange their own testing weekly. There will be no vaccination clinics at Anderson Ranch.

Requirements for Children

- Children are required to wear face coverings upon arrival and will be required to wear them during class when inside the building.
- Each child will be required to participate in a daily wellness check
- Vaccinations are not required for children's program participants at this time.

Additional Resources

- [Centers for Disease Control and Prevention](https://www.cdc.gov) (CDC)
- [Colorado Department of Public Health and Environment](https://www.colorado.gov) (CDPHE)
- [Pitkin County Covid-19 Response and Recovery](https://www.pitkincounty.com)

For the most up-to-date guidelines, please visit andersonranch.org.